



U.S. AIDS TO NAVIGATION SYSTEM

on navigable waters except Western Rivers

LATERAL SYSTEM AS SEEN ENTERING FROM SEAWARD

<p>PORT SIDE ODD NUMBERED AIDS</p> <p>GREEN LIGHT ONLY</p> <p>FLASHING (2) </p> <p>FLASHING </p> <p>OCCULTING </p> <p>QUICK FLASHING </p> <p>ISO </p> <p>1 LIGHT (1" FI G 6s)</p> <p>9 LIGHTED BUOY (G "9" FI G 4s)</p> <p>9 CAN (G C "9")</p> <p>5 DAYBEACON (G "5")</p>	<p>PREFERRED CHANNEL NO NUMBERS - MAY BE LETTERED</p> <p>PREFERRED CHANNEL TO STARBOARD TOPMOST BAND GREEN</p> <p>GREEN LIGHT ONLY</p> <p>COMPOSITE GROUP FLASHING (2+1) </p> <p>A LIGHTED BUOY (GR "A" FI (2+1) G 6s)</p> <p>U CAN (GR "U")</p> <p>S CAN (GR C "S")</p>	<p>PREFERRED CHANNEL NO NUMBERS - MAY BE LETTERED</p> <p>PREFERRED CHANNEL TO PORT TOPMOST BAND RED</p> <p>RED LIGHT ONLY</p> <p>COMPOSITE GROUP FLASHING (2+1) </p> <p>B LIGHTED BUOY (RG "B" FI (2+1) R 6s)</p> <p>C NUN (RG N "C")</p> <p>G DAYBEACON (RG "G")</p>	<p>STARBOARD SIDE EVEN NUMBERED AIDS</p> <p>RED LIGHT ONLY</p> <p>FLASHING (2) </p> <p>FLASHING </p> <p>OCCULTING </p> <p>QUICK FLASHING </p> <p>ISO </p> <p>2 LIGHT ("2" FI R 6s)</p> <p>8 LIGHTED BUOY (R "8" FI R 4s)</p> <p>6 NUN (R N "6")</p> <p>2 DAYBEACON (R "2")</p>
--	---	--	---

AIDS TO NAVIGATION HAVING NO LATERAL SIGNIFICANCE

<p>ISOLATED DANGER NO NUMBERS - MAY BE LETTERED</p> <p>WHITE LIGHT ONLY</p> <p>FI (2) 5s </p> <p>A LIGHTED (BR "A" FI (2) 5s)</p> <p>C UNLIGHTED (BR "C")</p>	<p>SAFE WATER NO NUMBERS - MAY BE LETTERED</p> <p>WHITE LIGHT ONLY MORSE CODE</p> <p>Mo (A) </p> <p>N LIGHTED AND/OR SOUND (RW "N" Mo (A))</p> <p>A MR (RW "A")</p> <p>B SPHERICAL (RW SP "B")</p> <p>N UNLIGHTED AND/OR SOUND (RW "N")</p>
<p>DAYBOARDS - MAY BE LETTERED</p> <p>WHITE LIGHT ONLY</p> <p>NR (RW Bn)</p> <p>NG (GW Bn)</p> <p>NB (BW Bn)</p>	<p>RANGE DAYBOARDS MAY BE LETTERED</p> <p>KGW, KWG, KWB, KBW, KWR, KRW, KRB, KBR, KGB, KBG, KGR, KRG</p>
<p>SPECIAL MARKS - MAY BE LETTERED</p> <p>YELLOW LIGHT ONLY</p> <p>FIXED FLASHING </p> <p>A UNLIGHTED (C "A")</p> <p>C UNLIGHTED (N "C")</p> <p>A UNLIGHTED (Y "A" Bn)</p> <p>B LIGHTED (Y "B" FI)</p> <p>SHAPE OPTIONAL—BUT SELECTED TO BE APPROPRIATE FOR THE POSITION OF THE MARK IN RELATION TO THE NAVIGABLE WATERWAY AND THE DIRECTION OF BUOYAGE.</p>	<p>MOORING BUOY</p> <p>WHITE WITH BLUE BAND</p> <p>MAY SHOW WHITE REFLECTOR OR LIGHT</p>

Aids to Navigation marking the Intracoastal Waterway (ICW) display unique yellow symbols to distinguish them from aids marking other waters. Yellow triangles indicate aids should be passed by keeping them on the starboard (right) hand of the vessel. Yellow squares indicate aids should be passed by keeping them on the port (left) hand of the vessel. A yellow horizontal band provides no lateral information, but simply identifies aids as marking the ICW.

TYPICAL INFORMATION AND REGULATORY MARKS

INFORMATION AND REGULATORY MARKERS

WHEN LIGHTED, INFORMATION AND REGULATORY MARKS MAY DISPLAY ANY WHITE LIGHT RHYTHM EXCEPT QUICK FLASHING, Mo(A), AND FLASHING (2)



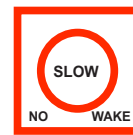
MOORING BUOY
WHITE WITH BLUE BAND
MAY SHOW WHITE REFLECTOR OR LIGHT



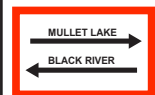
SWIM AREA
EXPLANATION MAY BE PLACED OUTSIDE THE CROSSED DIAMOND SHAPE, SUCH AS DAM, RAPIDS, SWIM AREA, ETC.



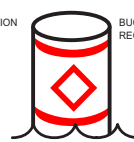
ROCK DANGER
THE NATURE OF DANGER MAY BE INDICATED INSIDE THE DIAMOND SHAPE, SUCH AS ROCK, WRECK, SHOAL, DAM, ETC.



SLOW NO WAKE CONTROLLED AREA
TYPE OF CONTROL IS INDICATED IN THE CIRCLE, SUCH AS SLOW, NO WAKE, ANCHORING, ETC.



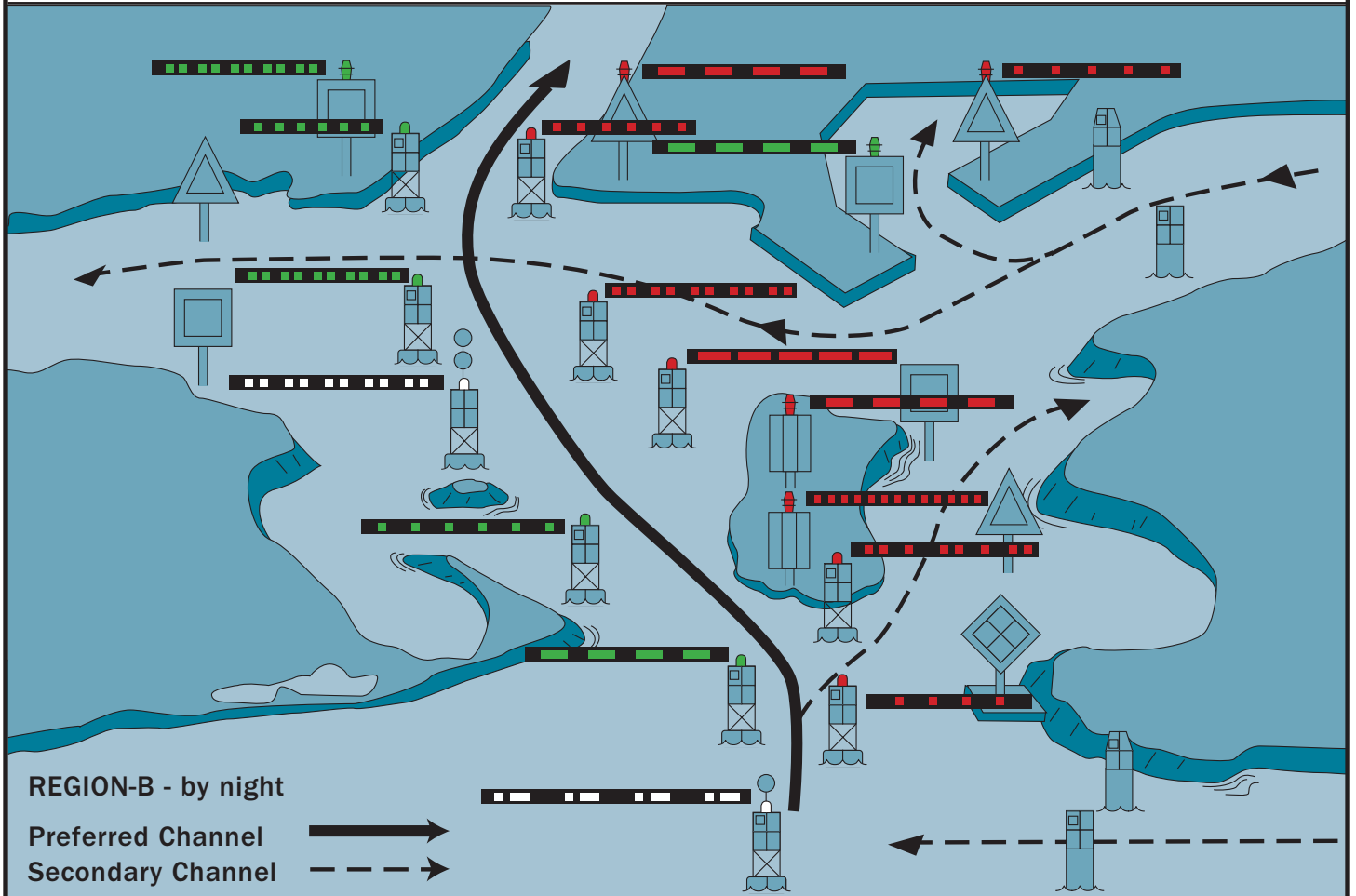
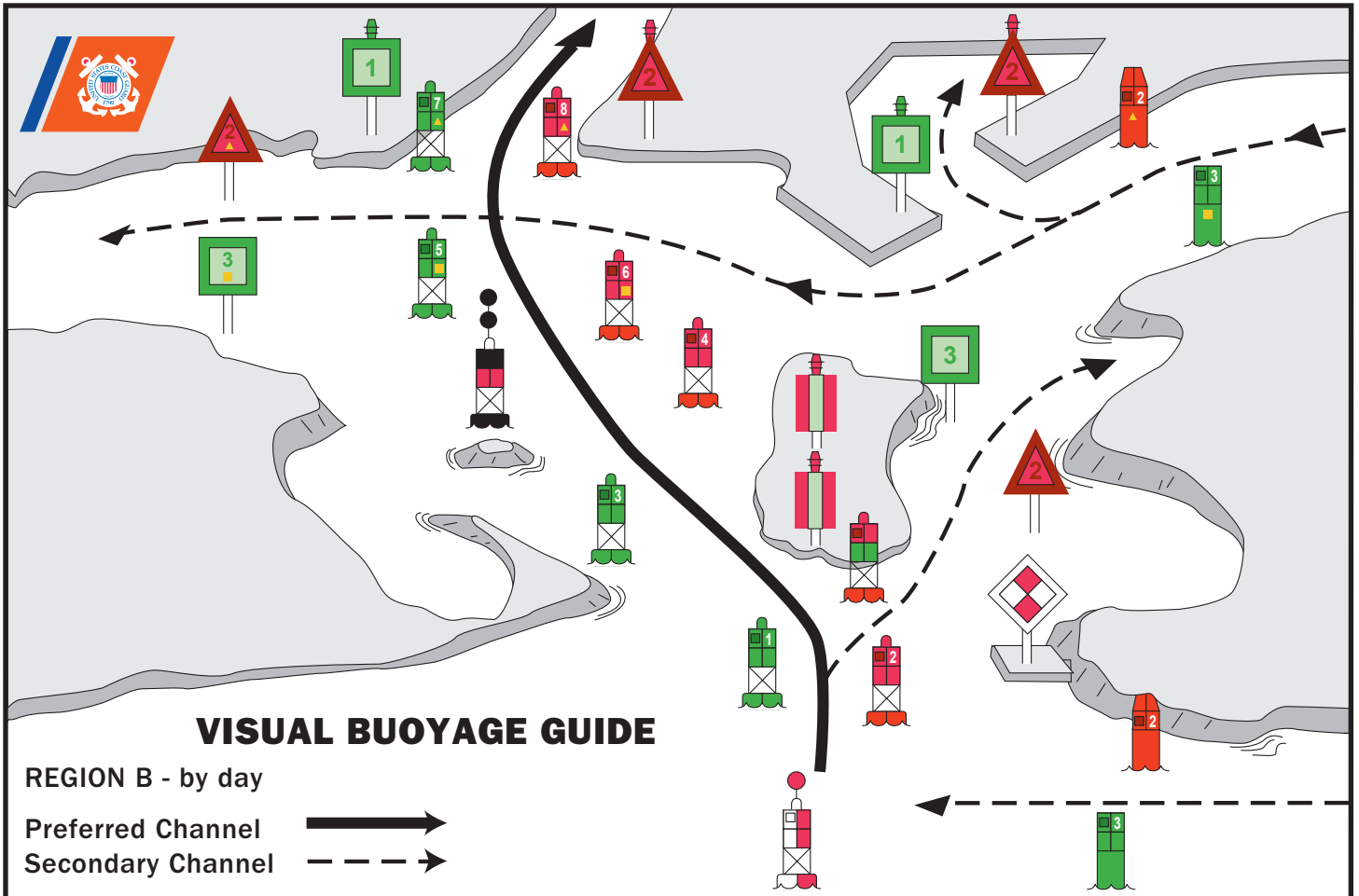
INFORMATION
FOR DISPLAYING INFORMATION SUCH AS DIRECTIONS, DISTANCES, LOCATIONS, ETC.



BUOY USED TO DISPLAY REGULATORY MARKERS

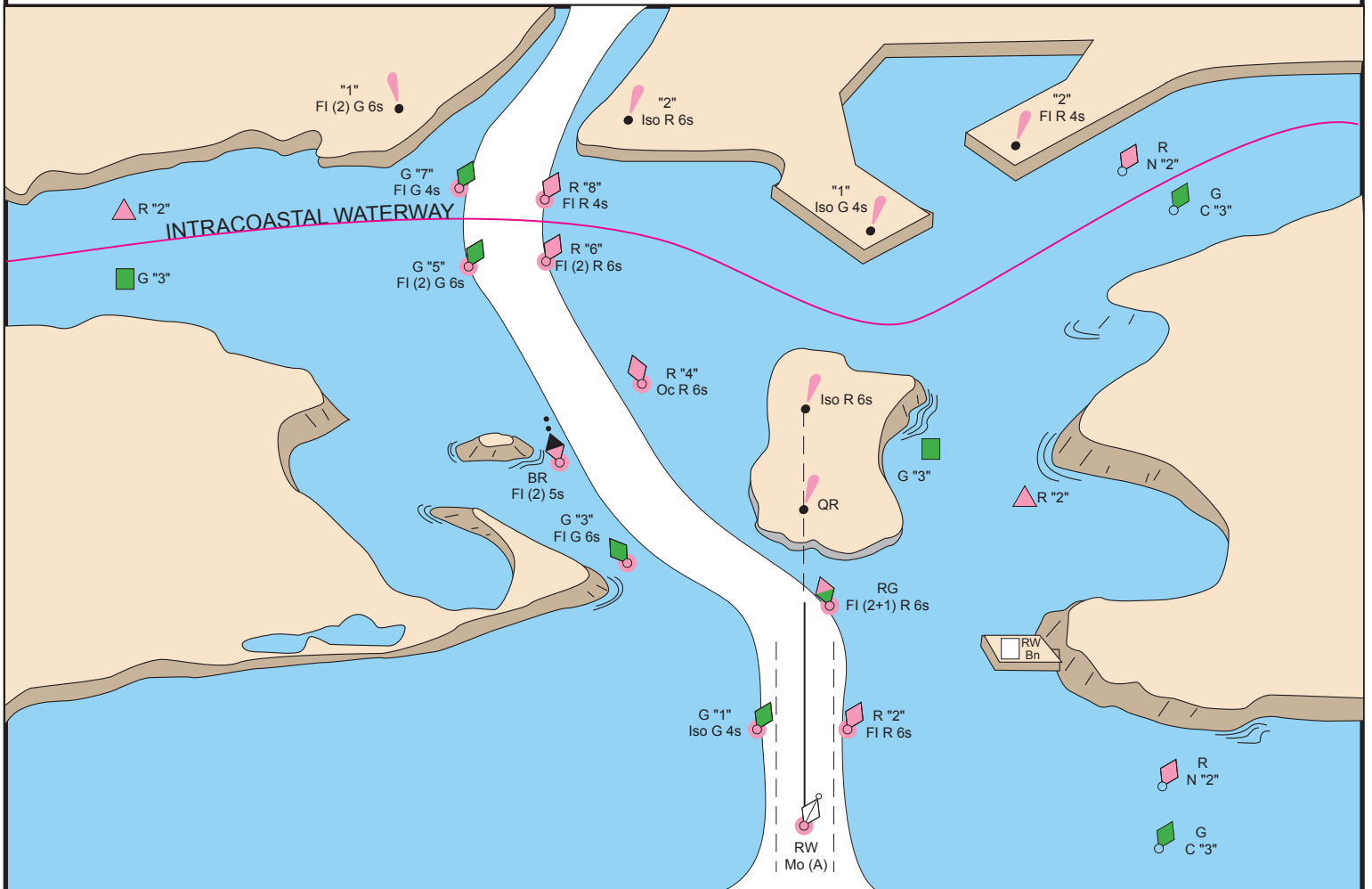


MAY SHOW WHITE LIGHT MAY BE LETTERED





FICTITIOUS NAUTICAL CHART





U.S. AIDS TO NAVIGATION SYSTEM

on the Western River System

AS SEEN ENTERING FROM SEAWARD

<p>PORT SIDE OR RIGHT DESCENDING BANK</p> <p>GREEN OR WHITE LIGHTS</p> <p>FLASHING ISO</p> <p>LIGHT LIGHTED BUOY CAN</p> <p>SG CNG</p> <p>PASSING DAYBEACON CROSSING DAYBEACON</p> <p>176.9 MILE BOARD</p>	<p>PREFERRED CHANNEL MARK JUNCTIONS AND OBSTRUCTIONS COMPOSITE GROUP FLASHING (2+1)</p> <table border="1"> <tr> <td data-bbox="506 346 812 829"> <p>PREFERRED CHANNEL TO STARBOARD TOPMOST BAND GREEN FI (2+1) G</p> <p>JG</p> </td> <td data-bbox="812 346 1125 829"> <p>PREFERRED CHANNEL TO PORT TOPMOST BAND RED FI (2+1) R</p> <p>JR</p> </td> </tr> </table> <p>DAYBOARDS HAVING NO LATERAL SIGNIFICANCE</p> <p>MAY BE LETTERED</p> <p>WHITE LIGHT ONLY</p> <p>NB</p>	<p>PREFERRED CHANNEL TO STARBOARD TOPMOST BAND GREEN FI (2+1) G</p> <p>JG</p>	<p>PREFERRED CHANNEL TO PORT TOPMOST BAND RED FI (2+1) R</p> <p>JR</p>	<p>STARBOARD SIDE OR LEFT DESCENDING BANK</p> <p>RED OR WHITE LIGHTS</p> <p>FLASHING (2) ISO</p> <p>LIGHT LIGHTED BUOY NUN</p> <p>TR CNR</p> <p>PASSING DAYBEACON CROSSING DAYBEACON</p> <p>123.5 MILE BOARD</p>
<p>PREFERRED CHANNEL TO STARBOARD TOPMOST BAND GREEN FI (2+1) G</p> <p>JG</p>	<p>PREFERRED CHANNEL TO PORT TOPMOST BAND RED FI (2+1) R</p> <p>JR</p>			

SPECIAL MARKS--MAY BE LETTERED

<p>UNLIGHTED LIGHTED</p>	<p>SHAPE: OPTIONAL--BUT SELECTED TO BE APPROPRIATE FOR THE POSITION OF THE MARK IN RELATION TO THE NAVIGABLE WATERWAY AND THE DIRECTION OF BUOYAGE.</p> <p>YELLOW LIGHT ONLY FIXED FLASHING</p>	<p>MOORING BUOY WHITE WITH BLUE BAND MAY SHOW WHITE REFLECTOR OR LIGHT</p>
--------------------------	---	--

TYPICAL INFORMATION AND REGULATORY MARKS

INFORMATION AND REGULATORY MARKERS

WHEN LIGHTED, INFORMATION AND REGULATORY MARKERS MAY DISPLAY ANY LIGHT RHYTHM EXCEPT QUICK FLASHING, Mo(a) AND FLASHING (2)

<p>BOAT EXCLUSION AREA DANGER SWIM AREA</p> <p>EXPLANATION MAY BE PLACED OUTSIDE THE CROSSED DIAMOND SHAPE, SUCH AS DAM, RAPIDS, SWIM AREA, ETC.</p>	<p>INFORMATION</p> <p>BUOY USED TO DISPLAY REGULATORY MARKERS</p>	<p>CONTROLLED AREA</p> <p>MAY SHOW WHITE LIGHT MAY BE LETTERED</p>
--	---	--

STATE WATERS

<p>INLAND (STATE) WATERS OBSTRUCTION MARK MAY SHOW WHITE REFLECTOR OR QUICK FLASHING WHITE LIGHT</p> <p>BLACK-STRIPED WHITE BUOY</p> <p>Used to indicate an obstruction to navigation, extends from the nearest shore to the buoy. This means "do not pass between the buoy and the nearest shore." This aid is replacing the red and white striped buoy within the USWMS, but cannot be used until all red and white striped buoys on a waterway have been replaced.</p>
